

(MRS. POTTS and MADAME DE LA GRANDE BOUCHE lead BELLE off. #15 GASTON.)

SCENE 6: The Tavern

(GASTON, sullen and morose, enters. VILLAGERS look on. LEFOU approaches.)

GASTON

Who does she think she is? That girl has tangled with the wrong man!

LEFOU

Darn right!

GASTON

No one says no to Gaston! Dismissed! Rejected! Publicly humiliated! It's more than I can bear.

LEFOU

Bear? Where!?

(LEFOU ducks behind GASTON and shudders.)

GASTON

Oh, Lefou... I'm disgraced.

LEFOU

(emerges from behind GASTON)

Who, you? Never! Gaston, you've got to pull yourself together.

Gaston

46 **LEFOU:**

Gosh it dis - turbs me to see you, Gas -

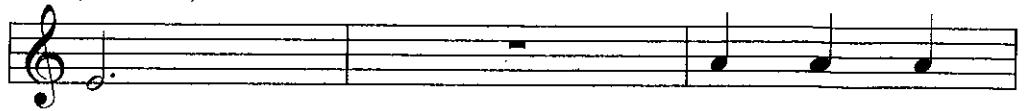
The first line of musical notation is on a treble clef staff in 3/4 time. It contains eight notes: G4, A4, B4, C5, B4, A4, G4, and F#4. The lyrics "Gosh it dis - turbs me to see you, Gas -" are written below the staff, with hyphens under "dis - turbs" and "Gas -".

49

ton, look - ing so down in the

The second line of musical notation is on a treble clef staff in 3/4 time. It contains six notes: G4, A4, B4, C5, B4, and A4. The lyrics "ton, look - ing so down in the" are written below the staff, with hyphens under "look - ing".

52 (LEFOU):



dumps.

Ev - 'ry guy

55



here'd like to be you, Gas - ton,

58



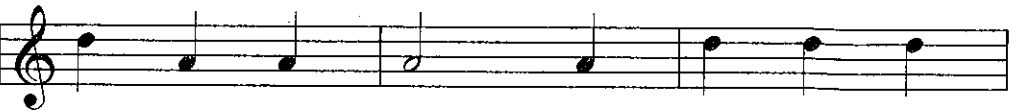
ev - en when tak - ing your lumps.

61



There's no man in town as ad -

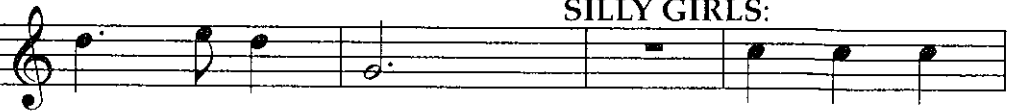
64



mir - ed as you. You're ev - 'ry - one's

67

SILLY GIRLS:



fa - vor-ite guy.

Ev - 'ry - one's

71



awed and in - spi - red by you and it's

74



not ver-y hard to see why.

LEFOU:

78

A tempo



No one's slick as Gas -

81



ton, no one's quick as Gas - ton, no one's

84



neck's as in - cred - i - bly thick as Gas -

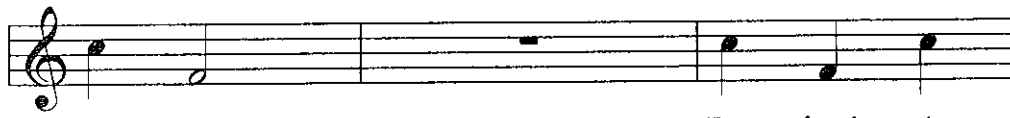
87

SILLY GIRLS:



ton. For there's no man in town half as

90



man - ly. Per - fect! A

93

LEFOU:



pure par - a - gon! You can

96



ask an - y Tom, Dick or Stan - ley,

99

**LEFOU,
SILLY GIRLS:**



and they'll tell you whose team they'd pre -

102 (LEFOU,
SILLY GIRLS): *rit.*

fer to be on!

(The VILLAGERS and SILLY GIRLS try to cheer up their idol,
GASTON.)

104 ALL: *A tempo*

No one's been like Gas -

107 LEFOU:

ton, a king - pin like Gas - ton. No one's

110

got a swell cleft in his chin like Gas -

113 GASTON:

ton! As a spec - i - men, yes I'm in -

116 ALL:

tim - i - dat - ing! My, what a

119

guy that Gas - ton! Give

122

five hur - rahs! Give twelve hip -

125

SILLY GIRLS:

hips! Gas - ton is the best and the

128

rall.

rest is all drips!

ALL:

130

A tempo

No one fights like Gas -

133

LEFOU:

ton, dous - es lights like Gas - ton. In a

136

wrest - ling match no - bo - dy bites like Gas -

139

SILLY GIRLS:

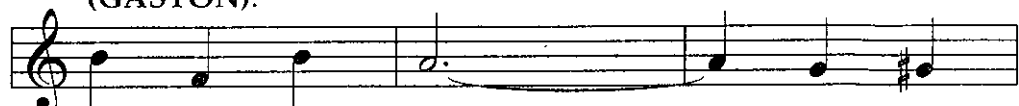
ton! For there's no one as bur - ly and

142


GASTON:

brawn - y. As you see I've got

145 (GASTON): Lefou: Not a
bi - ceps to spare. _____



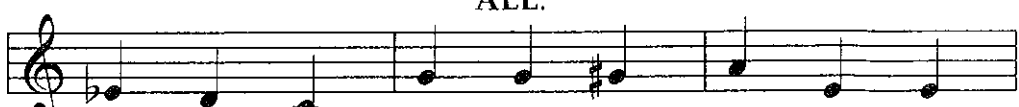
148 GASTON: That's
bit of him's scrag - gly or scrawn - y.



151 right! And ev - 'ry last inch of me's




154 ALL: cov - ered with hair! No one hits like Gas -



157 Lefou: ton, match - es wits like Gas - ton. In a



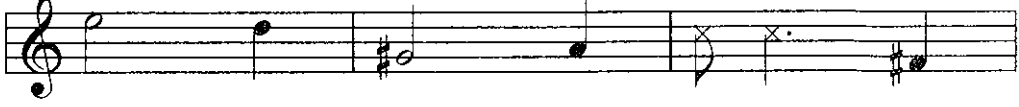
160 spit - ting match no - bo - dy spits like Gas -



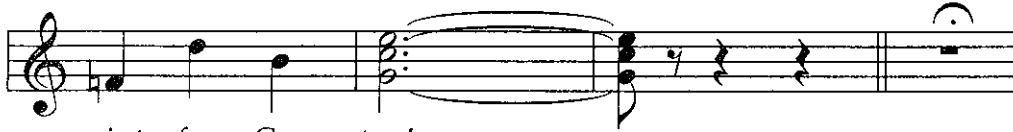
163 GASTON: ton. I'm es - pe - cial - ly good at ex -



166 ALL: pec - tor - a - ting! Ptoo-ey! Ten



169



points for Gas - ton!_____

(GASTON poses for the VILLAGERS.)

173



ALL:
Ooo! Ah!

181

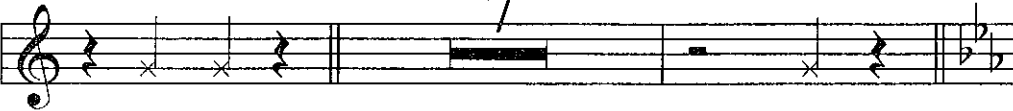


Wow! My what a guy that Gas - ton!_____

185

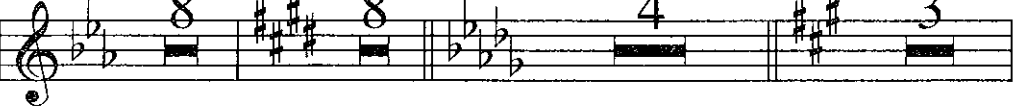


189 ALL:

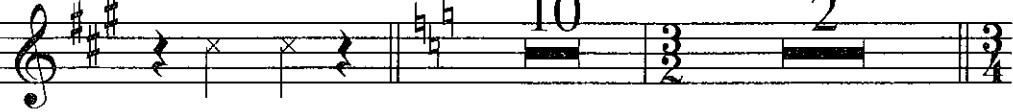


Gas-ton! Hey!

198

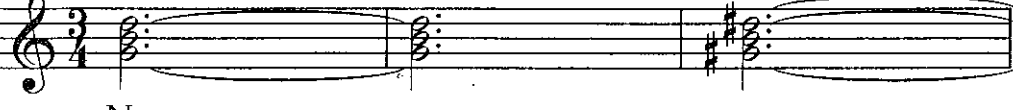


221



Let's Go!

234 (ALL:)



No_____ one_____

237

(ALL:)

— shoots like Gas - ton, makes those

240

LEFOU:

beauts like Gas - ton, then goes tromp-ing a -

243

// GASTON:

round wear - ing boots like Gas - ton. I use

246

ant - lers in all of my dec - o -

249

ALL:

rat - ing! My what a guy! —————

What a guy!

253

257

Gas - ton! —————

262

Hey!